

LA CASTAFIORE CHANTAIT TROP FORT

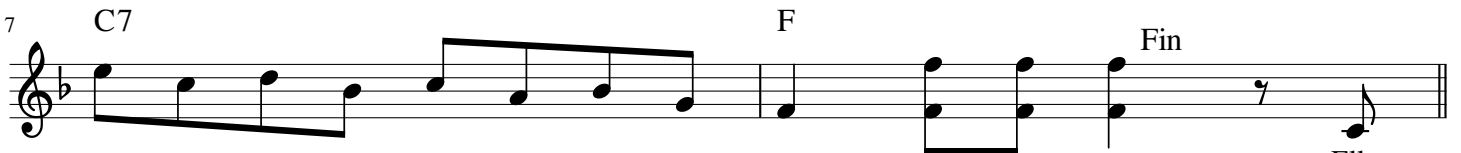
cha-cha

E.Blanchet - C.Depret - J.Richard - PY.Lombard

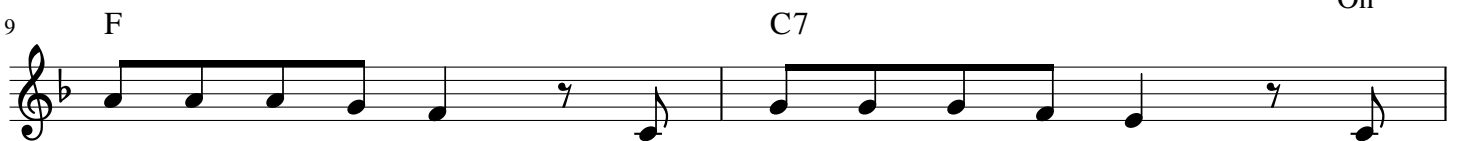
Intro

C7

F



Elle
On



por tait un co llier des bagues à cha que doigts elle
l'a vait sur no mmé ro ssi gnol mi la nais tou



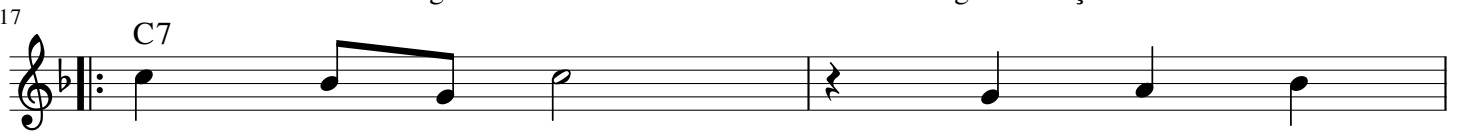
fai sait é cla ter du verre a vec sa voix Tout
jours trop ma qui llé mais elle ça lui plai sait Elle



le monde co nnaî ssait cette di va d'I ta lie qui
ri ait de se voir si belle dans son mi roir une




s'é tait fait vo ler ses bi joux par une pie Elle nous ca
robe ex tra va gante elle é tait a ga çante



ssait les o reilles la cas ta
la la la la


19 F



fio re Elle nous ca
La la la

Detailed description: This musical staff is in treble clef with a key signature of one flat (B-flat). It begins with a chord symbol 'F'. The melody starts with a quarter note 'fio', followed by a half note 're' with a slur over it. There is a whole rest in the second measure, followed by a quarter rest and then a quarter note 'Elle' in the third measure, a quarter note 'nous' in the fourth, and a quarter note 'ca' in the fifth. The lyrics 'La la la' are written below the notes in the third, fourth, and fifth measures respectively.


21 C7



ssait les o reilles
la la la la la cas ta fiore chan tait trop

Detailed description: This musical staff is in treble clef with a key signature of one flat. It begins with a chord symbol 'C7'. The melody starts with a quarter note 'ssait', followed by a quarter note 'les', a quarter note 'o', and a half note 'reilles'. There is a whole rest in the second measure, followed by a quarter rest and then a quarter note 'la' in the third measure, a quarter note 'cas' in the fourth, a quarter note 'ta' in the fifth, a quarter note 'fiore' in the sixth, a quarter note 'chan' in the seventh, a quarter note 'tait' in the eighth, and a quarter note 'trop' in the ninth. The lyrics are written below the notes.

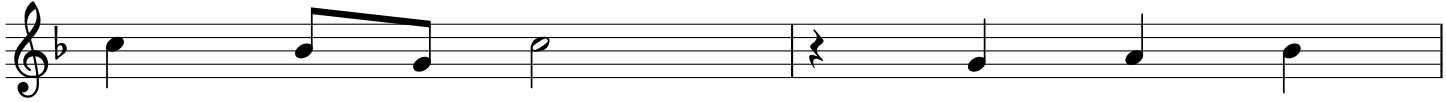
23 F



fort Elle nous ca
La la la

Detailed description: This musical staff is in treble clef with a key signature of one flat. It begins with a chord symbol 'F'. The melody starts with a quarter note 'fort', followed by a half note with a slur over it. There is a whole rest in the second measure, followed by a quarter rest and then a quarter note 'Elle' in the third measure, a quarter note 'nous' in the fourth, and a quarter note 'ca' in the fifth. The lyrics 'La la la' are written below the notes in the third, fourth, and fifth measures respectively.


25 C7



ssait les o reilles
la la la la la cas ta

Detailed description: This musical staff is in treble clef with a key signature of one flat. It begins with a chord symbol 'C7'. The melody starts with a quarter note 'ssait', followed by a quarter note 'les', a quarter note 'o', and a half note 'reilles'. There is a whole rest in the second measure, followed by a quarter rest and then a quarter note 'la' in the third measure, a quarter note 'cas' in the fourth, and a quarter note 'ta' in the fifth. The lyrics are written below the notes.


27 F



fio re elle nous ca
La la la

Detailed description: This musical staff is in treble clef with a key signature of one flat. It begins with a chord symbol 'F'. The melody starts with a quarter note 'fio', followed by a half note 're' with a slur over it. There is a whole rest in the second measure, followed by a quarter rest and then a quarter note 'elle' in the third measure, a quarter note 'nous' in the fourth, and a quarter note 'ca' in the fifth. The lyrics 'La la la' are written below the notes in the third, fourth, and fifth measures respectively.


29 C7



ssait les o reilles
la la la la la cas ta fiore chan tait trop

Detailed description: This musical staff is in treble clef with a key signature of one flat. It begins with a chord symbol 'C7'. The melody starts with a quarter note 'ssait', followed by a quarter note 'les', a quarter note 'o', and a half note 'reilles'. There is a whole rest in the second measure, followed by a quarter rest and then a quarter note 'la' in the third measure, a quarter note 'cas' in the fourth, a quarter note 'ta' in the fifth, a quarter note 'fiore' in the sixth, a quarter note 'chan' in the seventh, a quarter note 'tait' in the eighth, and a quarter note 'trop' in the ninth. The lyrics are written below the notes.

31 F



fort La la la

Detailed description: This musical staff is in treble clef with a key signature of one flat. It begins with a chord symbol 'F'. The melody starts with a quarter note 'fort', followed by a half note with a slur over it. There is a double bar line with a first ending bracket above it. The first ending consists of a quarter rest followed by a quarter note 'La' in the third measure, a quarter note 'la' in the fourth, and a quarter note 'la' in the fifth. This is followed by a repeat sign. The second ending consists of a quarter rest followed by a quarter note 'La' in the sixth measure, a quarter note 'la' in the seventh, and a quarter note 'la' in the eighth. The staff ends with a double bar line and a repeat sign.